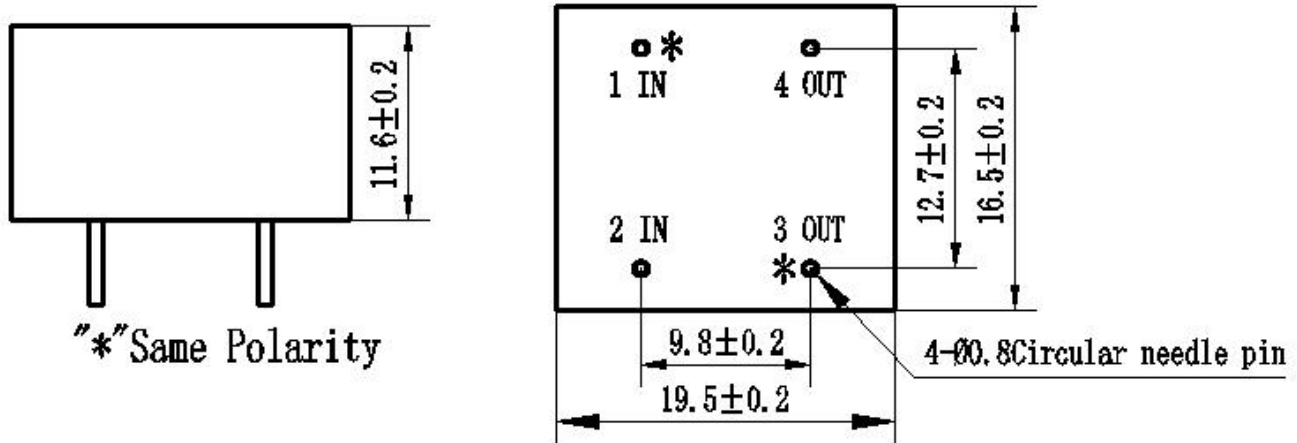


ZMPT112

Current-type Voltage transformer

Small size, high accuracy, good consistency, for voltage and power measurement

Structural parameters:



"*" Same Polarity

Wiring according to the drawings, homonymous ends diagonal, the input and output can be reversed

Front view

Bottom view

The main technical parameters:

Model	ZMPT112
Rated input current	2mA
Rated output current	2mA
turns ratio	1000:1000
phase angle error	≤45' (input 2mA, sampling resistor 50Ω)
linear range	0~1000V 0~10mA (sampling resistor 50Ω)
linearity	≤0.2% (20%~120%)
Permissible error	-0.6% ≤ f ≤ 0% (input 2mA, sampling resistance 50Ω)
isolation voltage	3000V
application	current and power measurement
Encapsulation	Epoxy
installation	PCB mounting (Pin Length>3mm)
operating temperature	-40℃~+85℃

Direction for use:

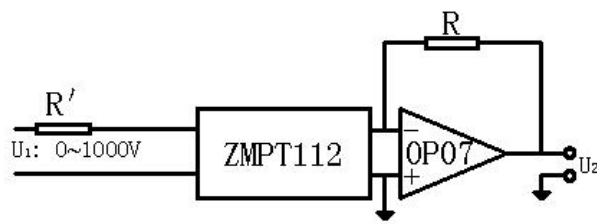


Figure I

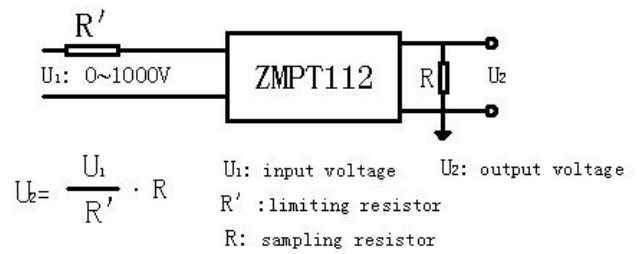


Figure II

1. The typical usage of the product is for the active output (Figure I). R' is a limiting resistor, R is a sampling resistor.
2. The product can be directly through the resistance sampling , easy to use (Figure II).