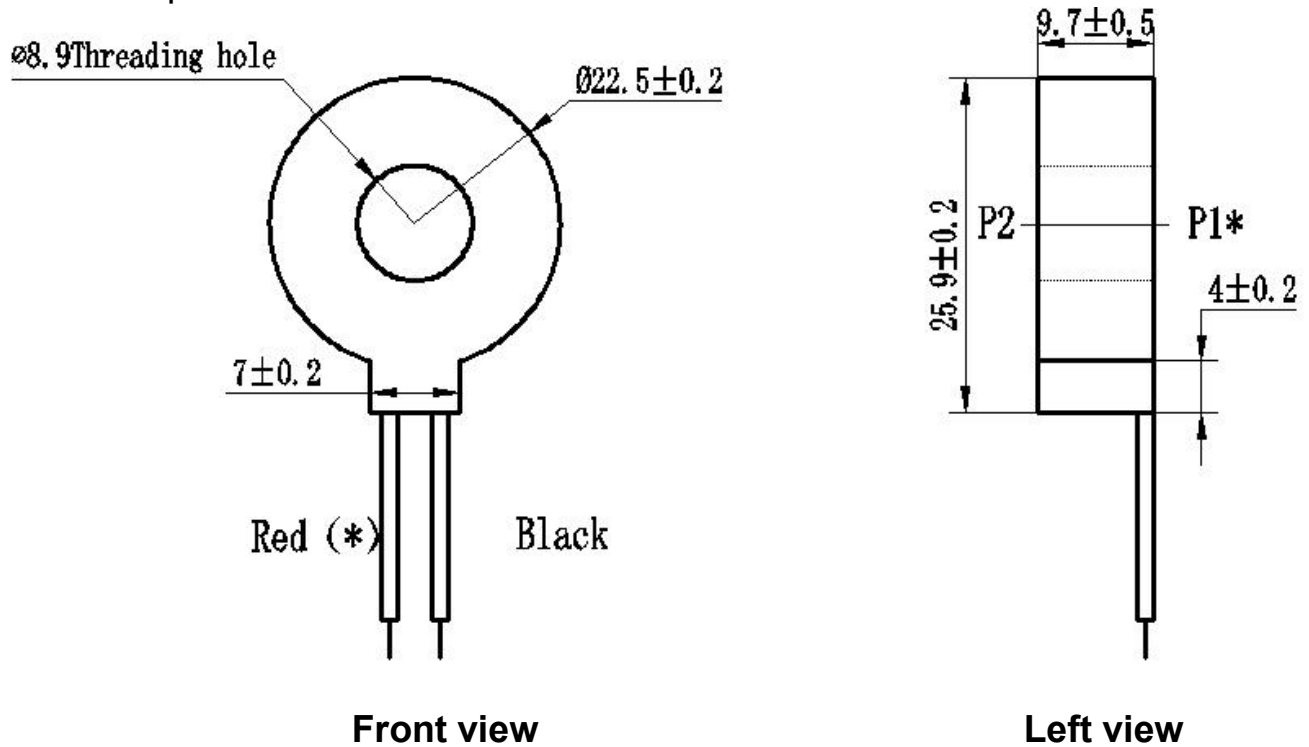


# ZMCT350B( class B) Current Transformer

Small size, high accuracy, good consistency, for current measurement

Structural parameters:



The main technical parameters:

Model	ZMCT350B (Class B)
input current	0~10A(sampling resistor 100Ω)
Rated output current	5mA input 5A
turns ratio	1000:1
phase angle error	≤30' (input 10A, sampling resistor 100Ω)
Accuracy class	0.5
linearity	0.5%(20%~120% of 5A)
Ratio error	-0.5%≤f≤+0.5%(input 10A, sampling resistor 100Ω)
isolation voltage	3000V
application	measurement
Encapsulation	Epoxy
installation	Output leads installation
operating temperature	-40℃~+85℃

Instructions:

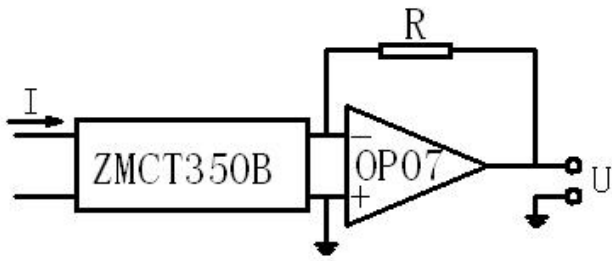
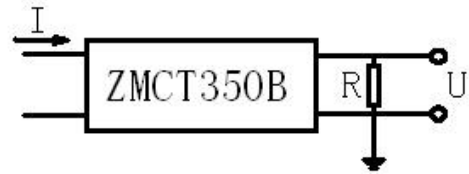


Figure I



$$U = \frac{I}{1000} \cdot R$$

I: input current  
 R: sampling resistor  
 U: sampling voltage

Figure II

1. ZMCT350B(class B) used for the measurement, the typical usage is shown in Figure I and Figure II. R is a sampling resistor.