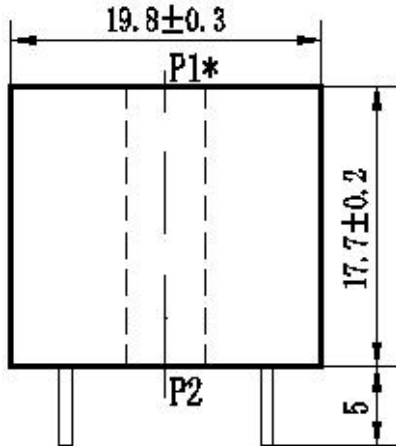


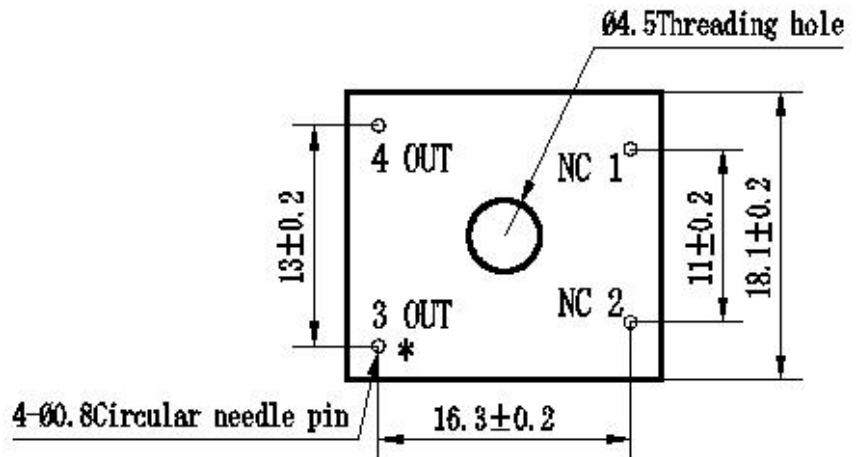
ZMCT113C Current Transformer

Small size, wide linear range, mainly for power automation protection sampling

Structural parameter:



* Same Polarity



3、4pin: secondary output, 1、2pin: empty pin

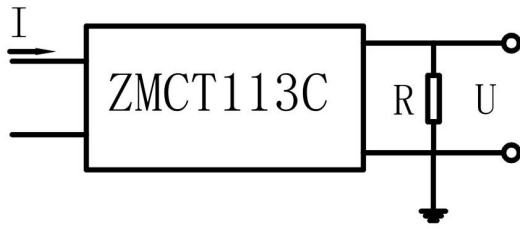
Front view

Bottom view

The main technical parameters:

Model	ZMCT113C
Rated input current	0~100A (sampling resistor 20Ω)
Rated output current	2.5mA at input 5A
turns ratio	2000:1
phase angle error	≤60' (input 5A, sampling resistor 20Ω)
Accuracy class	0.5
linearity	≤0.3% (5%dot and 120%dot)
Ratio error	-0.5%≤f≤+0.5% (input 5A, sampling resistor 20Ω)
isolation voltage	4500V
application	power automation protection sampling
Encapsulation	Epoxy
installation	PCB mounting (pin length >3mm)
operating temperature	-40℃~+70℃

Direction for use:



$$U = \frac{I}{2000} \cdot R$$

I:input current

R:sampling resistor

V:sampling voltage

1. ZMCT113C used for protection. Typical usage as shown
2. Empty pin can not be grounded.