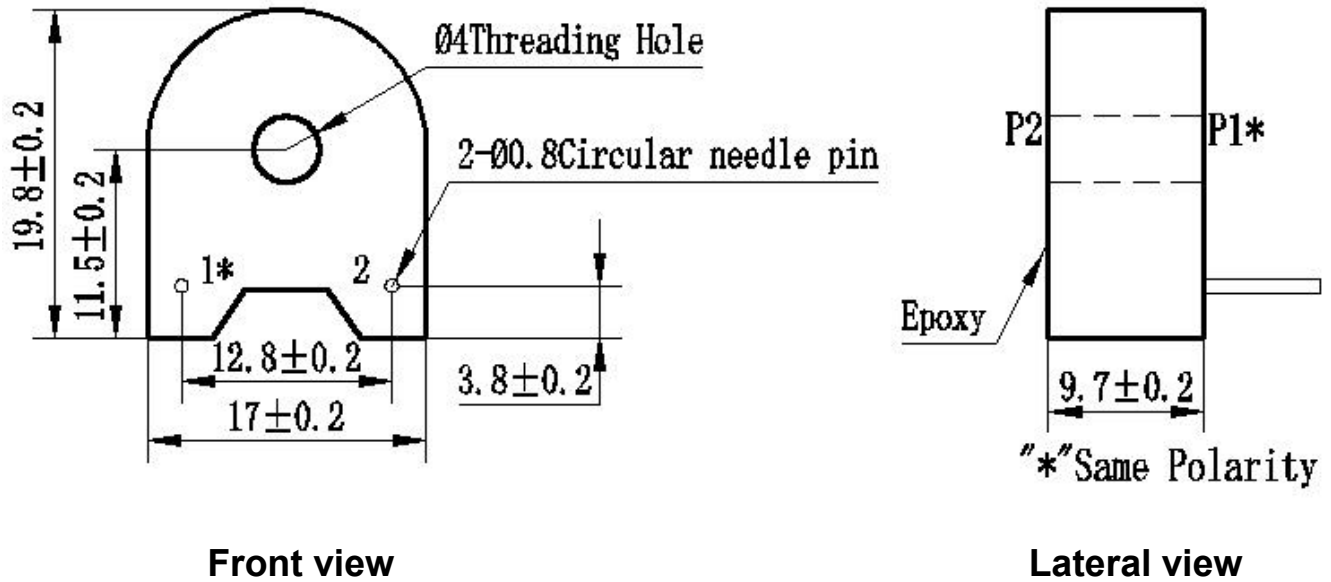


# ZMCT104C current transformer

Small size, high accuracy, good consistency, for current and power measurement

## Structural parameters:



Front view

Lateral view

## The main technical parameters:

model	ZMCT104C
input current	0~20A (sampling resistor 100Ω)
Rated output current	2.5mA at input 5A
turns ratio	2000:1
phase angle error	≤15' (input 5A, sampling resistor 100Ω)
linear range	0~20A (sampling resistor 100Ω)
linearity	≤0.2% (5%dot~120%dot)
Permissible error	-0.2%≤f≤+0.2% (input 5A, sampling resistor 100Ω)
isolation voltage	4500V
application	Precise measurement of current and power
Encapsulation	Epoxy
installation	PCB mounting (Pin Length>3mm)
operating temperature	-40℃~+85℃

Direction for use:

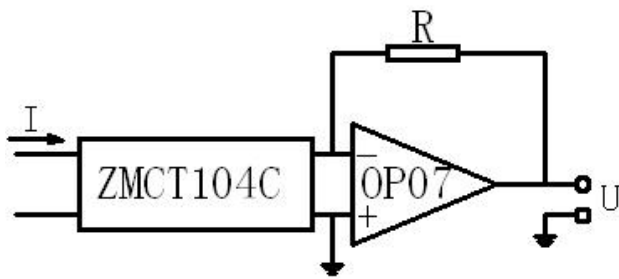
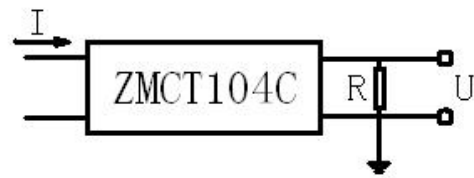


Figure I



$$U = \frac{I}{2000} \cdot R$$

I: input current

R: sampling resistor

U: sampling voltage

Figure II

1. The typical usage of the product is for the active output ( Figure I ). R is a sampling resistor.
2. The product can be directly through the resistance sampling, easy to use (Figure II).