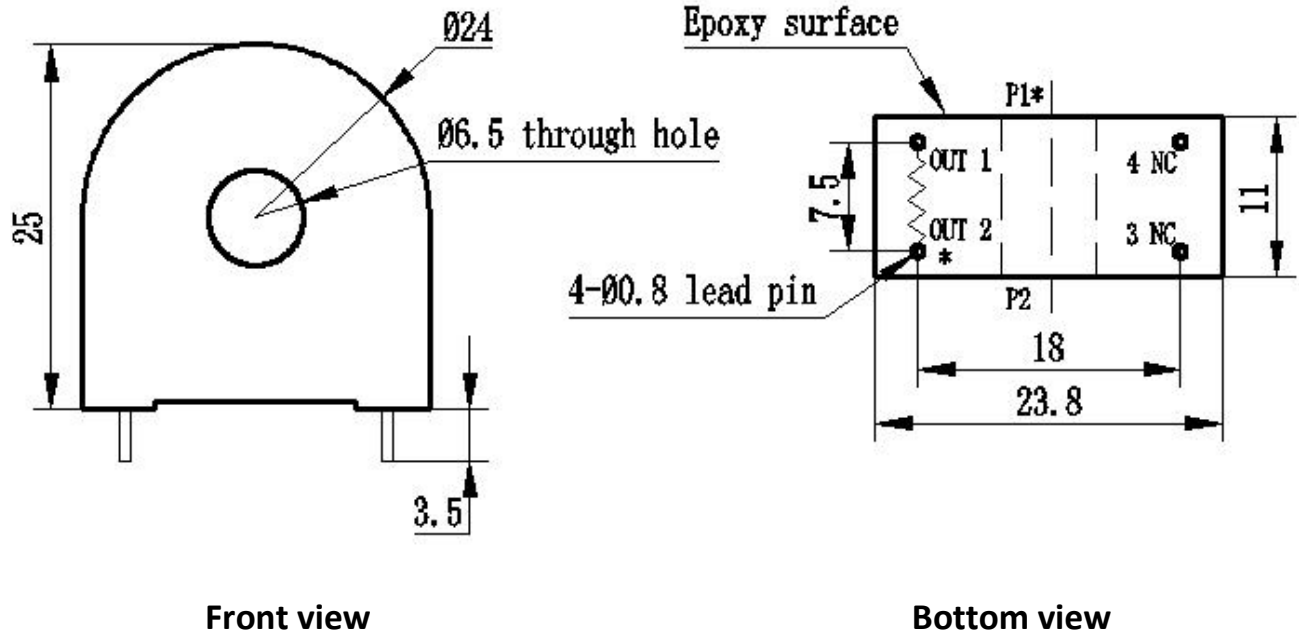


# TA502/2-A Current Transformer

Small size, high accuracy, good consistency, for power measurement and protection

## Structural parameter:



## The main technical parameters:

Model	TA502/2-A
Rated input current	0~70A (sampling resistor 100Ω)
Rated output current	2mA at input 5A
turns ratio	2500:1
Phase angle error	≤20' (input 1A, sampling resistor 100Ω)
Accuracy class	0.2
linearity	0.1%(5%dot~120%dot)
Permissible error	-0.2%≤f≤+0.2% (input 1A, sampling resistor 100Ω)
isolation voltage	4500V
application	current and power measurement
Encapsulation	Epoxy
installation	PCB mounting
operating temperature	-40℃~+85℃

Direction for use:

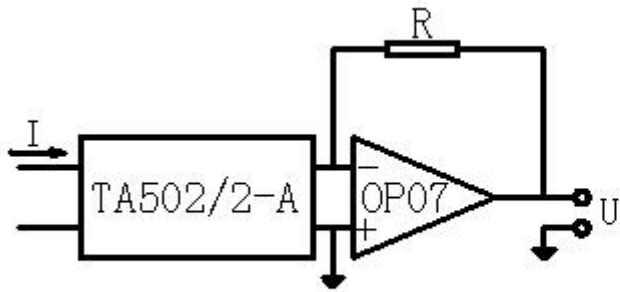
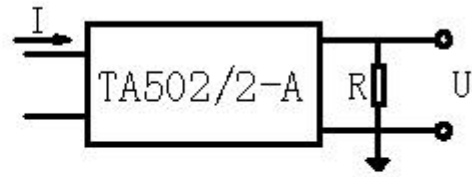


Figure I



$$U = \frac{I}{2500} \cdot R$$

I: input current  
R: sampling resistor  
U: sampling voltage

Figure II

1. TA502/2-A used for measurement. Typical usage is shown in Figure 1 and Figure 2. R is a sampling resistor.
2. Empty pin can not be grounded.